

Application Menu

Login

Universe

- Ratings Changes
- Ratings Reports
- Factor Returns
- Daily Earnings Report
- Benchmark Returns
- Sector Analysis
- ERS Changes
- Trend Analysis
- Universe Valuation Analysis

Lists

- Select Companies/Create List
- Edit/View Existing Trade Lists
- Existing DCF Templates

Individual Security Analysis

- Individual Analysis
- Valuation Analysis
- Short Term Trend Analysis
- ERS Analysis
- ProForma Financials

Portfolio Analysis

- Construct/Analyze a Portfolio
- Track Portfolio Performance
- Holdings Based Style Analysis

Backtesting

- Build a Test
- Edit/Run a Test
- Test Results

Screening

- Define New Screening Data Item
- Create New Screen
- Edit/View Report Format

Alphas

- Define New Alpha Data Item
- Construct Alpha Strategy
- Edit/View Alpha Strategies

Powerful analytics for stock selection and portfolio construction

DATA
You need



ANSWERS
You want

SOLUTIONS
that win



Success is not achieved on good intentions alone.



Application Menu

Login

Universe

- Ratings Changes
- Ratings Reports
- Factor Returns
- Daily Earnings Report
- Benchmark Returns
- Sector Analysis
- ERS Changes
- Trend Analysis
- Universe Valuation Analysis

Lists

- Select Companies/Create List
- Edit/View Existing Trade Lists
- Existing DCF Templates

Individual Security Analysis

- Individual Analysis
- Valuation Analysis
- Short Term Trend Analysis
- ERS Analysis
- ProForma Financials

Portfolio Analysis

- Construct/Analyze a Portfolio
- Track Portfolio Performance
- Holdings Based Style Analysis

Backtesting

- Build a Test
- Edit/Run a Test
- Test Results

Screening

- Define New Screening Data Item
- Create New Screen
- Edit/View Report Format

Alphas

- Define New Alpha Data Item
- Construct Alpha Strategy
- Edit/View Alpha Strategies

Powerful Analysis on Individual Securities:

- Peer into the factors driving stock price performance through Individual Analysis
- Compare your company views to ELROI with regards to stock ratings, risk and expected return

Individual Analysis

Ticker: Search Tickers Select Date: 4/29/2011

Basic Data

Ticker: ADP Name: AUTOMATIC DATA PROCESSING Indst: Data Processing & Outsrc Svc

Price: 4/29/11: 54.36 Market Cap (\$Mil): \$26,985.23 Shrs Out (Mil): 495.5
 1YHI: 4/29/11: 54.46 Dividend: \$ 1.44 12/10(\$MM): \$2,405.8 ↑ 9.5%
 1YLO: 5/06/10: 26.46 Yield: 2.65% LTM Sls 12/10(\$MM): \$9,268.7 ↑ 5.8%

Earnings Data

Qtr 12/10: \$0.62 0.0% Momentum: 1.7 LTM 12/10: \$2.39 ↓ 10.5% P/E: 22.7x
 Cur 3/11: \$0.85 ↑ 7.4%
 Next 6/11: \$0.47 ↑ 11.3%

Quadrant Analysis

Quadrant: 3 PE Decile
 Gr Rt Yrs: 8 Total Score
 Days Sidways: 0 LT Growth

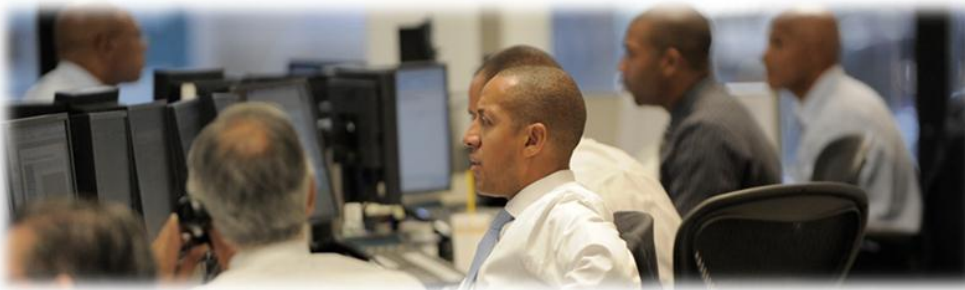
Ratings Profile

Rating: Accumulate
 Tech Risk: High
 Alert: None
 LT Trend: Neutral Up
 Portfolio: Moderate Overweig

Comparative Analysis

Ticker	ADP	CSC	V	WU	MA	SubIndustry
Price	54.36	50.98	78.12	21.25	275.89	
52wk High	54.46	56.61	94.60	22.03	278.10	
52wk Low	26.46	39.61	64.90	14.65	191.00	
P/E (Cur)	22.7x	9.6x	18.5x	15.4x	19.6x	19.2x
P/E (FY1)	21.8x	9.8x	16.1x	14.0x	16.5x	16.1x
P/E (FY2)	20.2x	9.4x	13.9x	12.4x	14.1x	14.1x
P/E Decile	5	7	10	7	9	
P/EBITDA	12.4x	3.4x	7.6x	9.1x	11.5x	12.5x
Price/FCF	39.9x	25.2x	14.1x	11.0x	15.4x	33.3x
Price/Sales	2.9x	0.5x	4.6x	2.6x	6.2x	2.9x
Dividend	\$ 1.44	\$ 0.80	\$ 0.60	\$ 0.28	\$ 0.60	
Yield	2.65%	1.57%	0.77%	1.32%	0.22%	1.26%
LT Growth	11.5%	9.0%	20.0%	12.0%	20.0%	12.9%
FY1PE/Gr	1.90	1.09	0.80	1.17	0.83	1.25
FY2PE/Gr	1.76	1.04	0.70	1.04	0.70	1.10
Price/Book	4.66	1.10	2.23	48.30	6.94	2.89
Cur Bk Val	\$ 11.66	\$ 46.48	\$ 35.06	\$ 0.44	\$ 39.73	
12M %Ch BV	2.0%	7.7%	10.5%	-21.5%	47.2%	

- View stocks side-by-side, and against industry statistics along select financial metrics



Application Menu

Login

Universe

- Ratings Changes
- Ratings Reports
- Factor Returns
- Daily Earnings Report
- Benchmark Returns
- Sector Analysis
- ERS Changes
- Trend Analysis
- Universe Valuation Analysis

Lists

- Select Companies/Create List
- Edit/View Existing Trade Lists
- Existing DCF Templates

Individual Security Analysis

- Individual Analysis
- Valuation Analysis
- Short Term Trend Analysis
- ERS Analysis
- ProForma Financials

Portfolio Analysis

- Construct/Analyze a Portfolio
- Track Portfolio Performance
- Holdings Based Style Analysis

Backtesting

- Build a Test
- Edit/Run a Test
- Test Results

Screening

- Define New Screening Data Item
- Create New Screen
- Edit/View Report Format

Alphas

- Define New Alpha Data Item
- Construct Alpha Strategy
- Edit/View Alpha Strategies

Quickly value companies and compare results with the most comprehensive commercial financial proforma and company valuation model in the industry

The screenshot displays the ELROI software interface, which is used for financial analysis and valuation. It features several key components:

- Balance Sheet:** A table showing historical and projected data for assets, liabilities, and equity. Columns include years from 2004 to 2010, with a '2011' column for projections. Rows include 'Total Assets', 'Total Liabilities', and 'Total Equity'.
- Income Statement:** A table showing historical and projected data for revenue, expenses, and earnings. Columns include years from 2004 to 2010, with a '2011' column for projections. Rows include 'Revenue', 'Operating Expenses', and 'Net Income'.
- Valuation Report:** A detailed report containing various financial metrics and assumptions. It includes sections for 'Company', 'Assumptions', and 'Valuation Results'. The report uses a color-coded system (green for positive, red for negative) to highlight key areas.

Customize assumptions on growth rates, comps, projections to generate forward prices and valuations.



Application Menu

Login

Universe

- Ratings Changes
- Ratings Reports
- Factor Returns
- Daily Earnings Report
- Benchmark Returns
- Sector Analysis
- ERS Changes
- Trend Analysis
- Universe Valuation Analysis

Lists

- Select Companies/Create List
- Edit/View Existing Trade Lists
- Existing DCF Templates

Individual Security Analysis

- Individual Analysis
- Valuation Analysis
- Short Term Trend Analysis
- ERS Analysis
- ProForma Financials

Portfolio Analysis

- Construct/Analyze a Portfolio
- Track Portfolio Performance
- Holdings Based Style Analysis

Backtesting

- Build a Test
- Edit/Run a Test
- View Test Results

Screening

- Define New Screening Data Item
- Create New Screen
- Edit/View Report Format

Alphas

- Define New Alpha Data Item
- Construct Alpha Strategy
- Edit/View Alpha Strategies

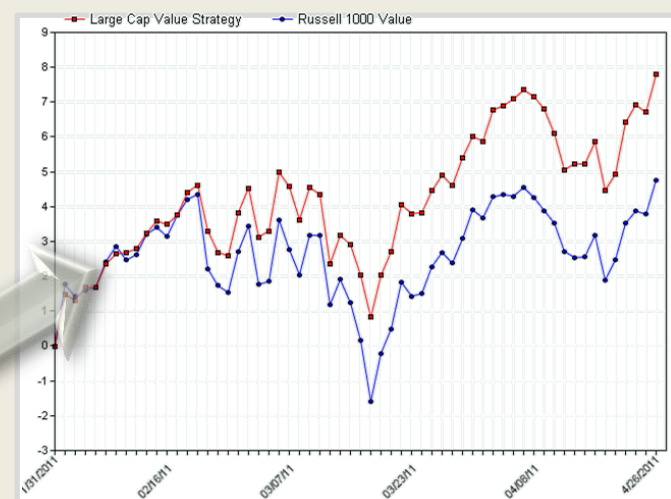
Construct portfolios to test or implement against current strategies:

- Using ELROI's powerful single index optimizer, create testable strategies to follow ideas over time, or against specific portfolios

Large Cap Value Strategy vs. Russell 1000 ValueGIC (1/31/11-4/26/11)

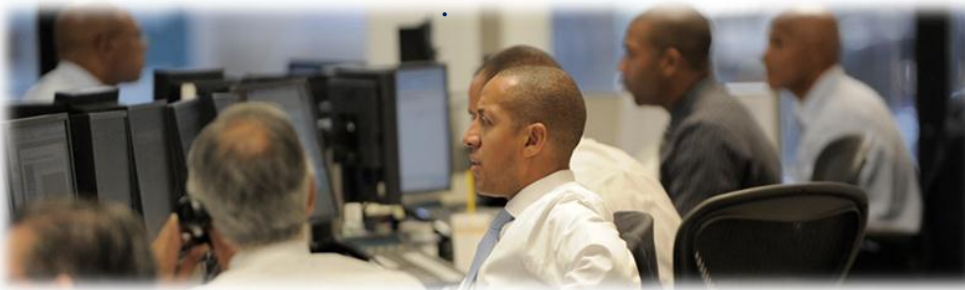
Sector	Weight	Price return	%Stock Selection	%Port Selection	%Total ActContribution	%Total Contribution
Energy	13.89	7.704	-0.225	0.083	-0.141	1.070
Materials	4.24	9.792	0.139	0.071	0.209	0.415
Industrials	9.96					
Consumer Discretionary	8.33					
Consumer Staples	10.01					
Health Care	11.55					
Financials	26.67					
Information Technology	6.43					
Telecommunication Serv	3.51					
Utilities	5.41					
Summary	100.00					

Large Cap Value Strategy vs. Russell 1000 (1/31/2011-4/26/2011)



Present performance instantly:

- Track current or backtested portfolios daily, including charting and attribution analysis



Application Menu

Login

Universe

Ratings Changes
Ratings Reports
Factor Returns
Daily Earnings Report
Benchmark Returns
Sector Analysis
ERS Changes
Trend Analysis
Universe Valuation Analysis

Lists

Select Companies/Create List
Edit/View Existing Trade Lists
Existing DCF Templates

Individual Security Analysis

Individual Analysis
Valuation Analysis
Short Term Trend Analysis
ERS Analysis
ProForma Financials

Portfolio Analysis

Construct/Analyze a Portfolio
Track Portfolio Performance
Holdings Based Style Analysis

Backtesting

Build a Test
Edit/Run a Test
View Test Results

Screening

Define New Screening Data Item
Create New Screen
Edit/View Report Format

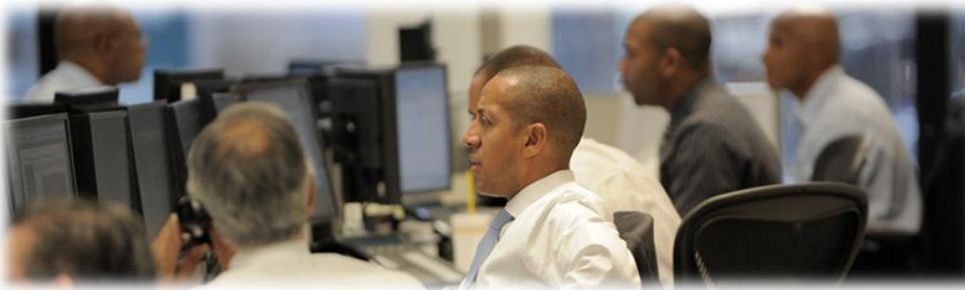
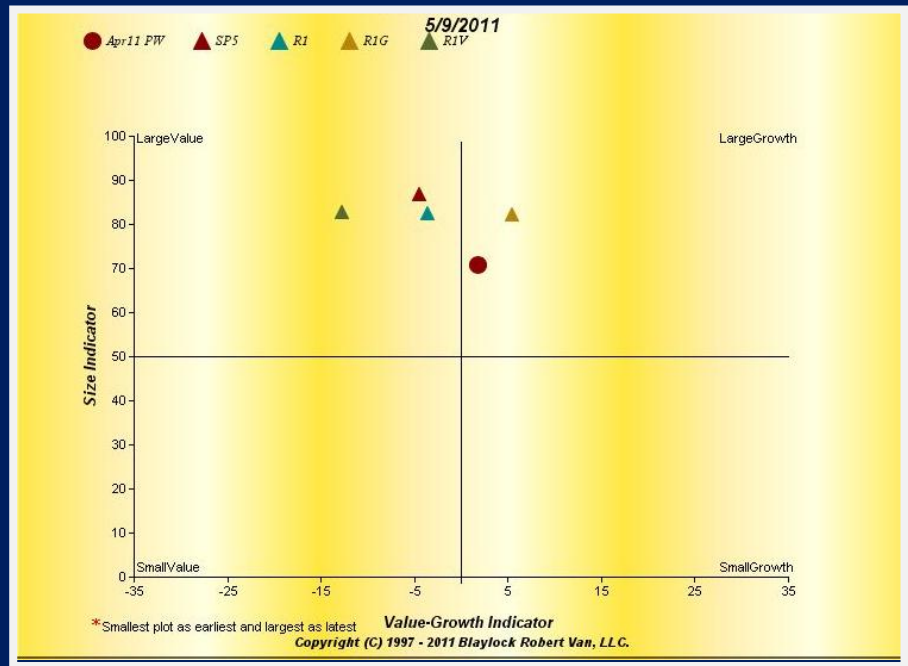
Alphas

Define New Alpha Data Item
Construct Alpha Strategy
Edit/View Alpha Strategies

Inspect Style Characteristics over time:

- with ELROI's Holdings Based Style Analyzer watch for drift of portfolios or benchmarks with respect to fundamental criteria and *more*.

HOLDINGS BASED STYLE



Application Menu

Login

Universe

- Ratings Changes
- Ratings Reports
- Factor Returns
- Daily Earnings Report
- Benchmark Returns
- Sector Analysis
- ERS Changes
- Trend Analysis
- Universe Valuation Analysis

Lists

- Select Companies/Create List
- Edit/View Existing Trade Lists
- Existing DCF Templates

Individual Security Analysis

- Individual Analysis
- Valuation Analysis
- Short Term Trend Analysis
- ERS Analysis
- ProForma Financials

Portfolio Analysis

- Construct/Analyze a Portfolio
- Track Portfolio Performance
- Holdings Based Style Analysis

Backtesting

- Build a Test
- Edit/Run a Test
- View Test Results

Screening

- Define New Screening Data Item
- Create New Screen
- Edit/View Report Format

Alphas

- Define New Alpha Data Item
- Construct Alpha Strategy
- Edit/View Alpha Strategies

Screen on ideas and construct ranking strategies:

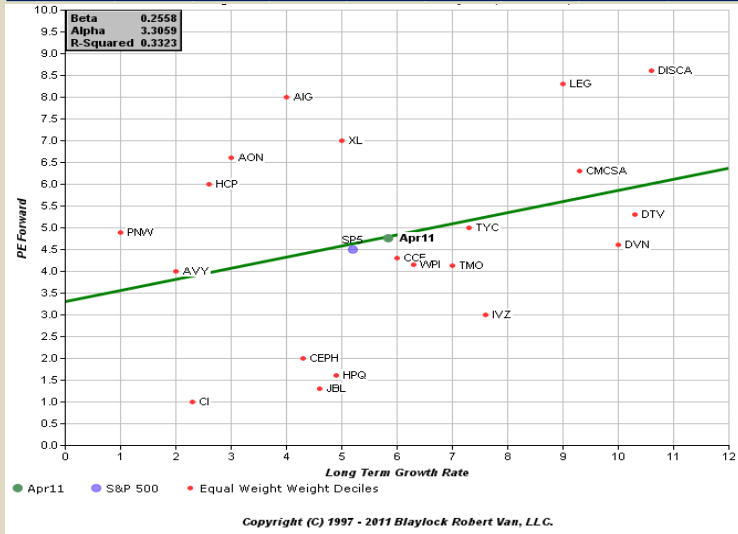
- Use ELROI's powerful database screening engine to sift through our daily 4500-stock database
- Construct multi-variable ranking strategies to order stocks by fundamental attractiveness

Decile & Alpha Values

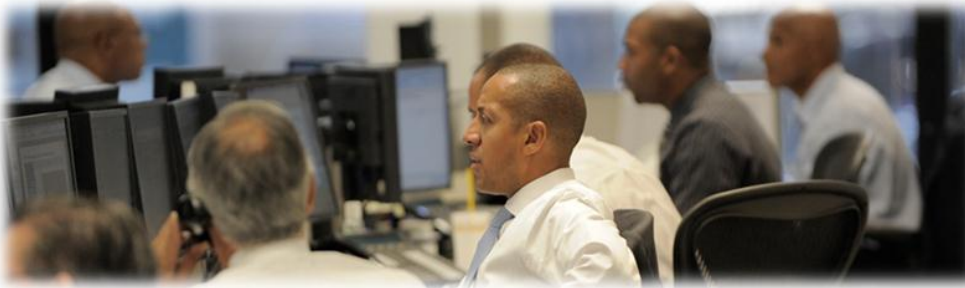
Ticker Symbol	Col 1	Col 2	Col 3	Col 4	Col 5	Col 6	Col 7	Col 8	Col 9	Total Score	Alpha Value
SFT	7	6	0	0	4	18	0	30	40	105	73.94
SB	6	6	0	0	3	20	2	27	40	104	73.24
FL	5	7	0	0	4	18	-2	27	40	99	69.72
PLS	7	8	1	1	4	14	-2	24	40	97	68.31
SG	10	5	5	0	4	14	-2	21	40	97	68.31

Stock Characteristics Analysis

4/26/2011



- Model financial data concepts to inspect market efficiencies in pricing stocks, benchmarks and portfolios
- Easily view outliers to a particular investment strategy



Application Menu

Login

Universe

- Ratings Changes
- Ratings Reports
- Factor Returns
- Daily Earnings Report
- Benchmark Returns
- Sector Analysis
- ERS Changes
- Trend Analysis
- Universe Valuation Analysis

Lists

- Select Companies/Create List
- Edit/View Existing Trade Lists
- Existing DCF Templates

Individual Security Analysis

- Individual Analysis
- Valuation Analysis
- Short Term Trend Analysis
- ERS Analysis
- ProForma Financials

Portfolio Analysis

- Construct/Analyze a Portfolio
- Track Portfolio Performance
- Holdings Based Style Analysis

Backtesting

- Build a Test
- Edit/Run a Test
- View Test Results

Screening

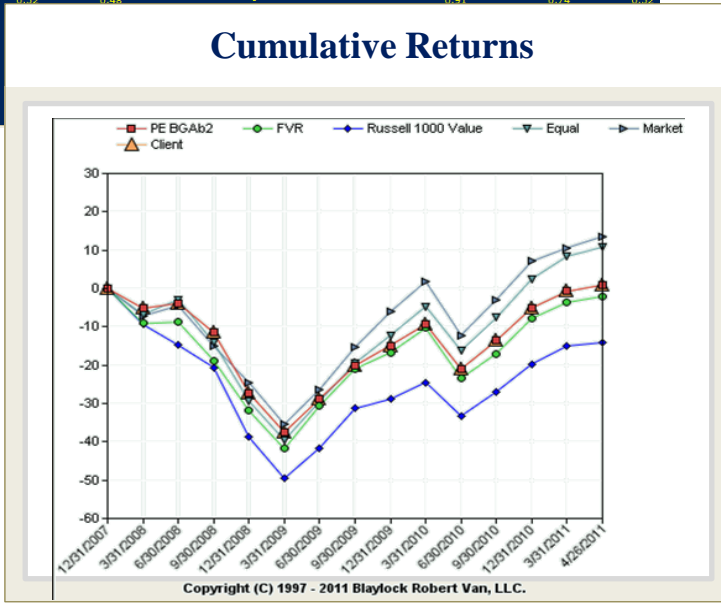
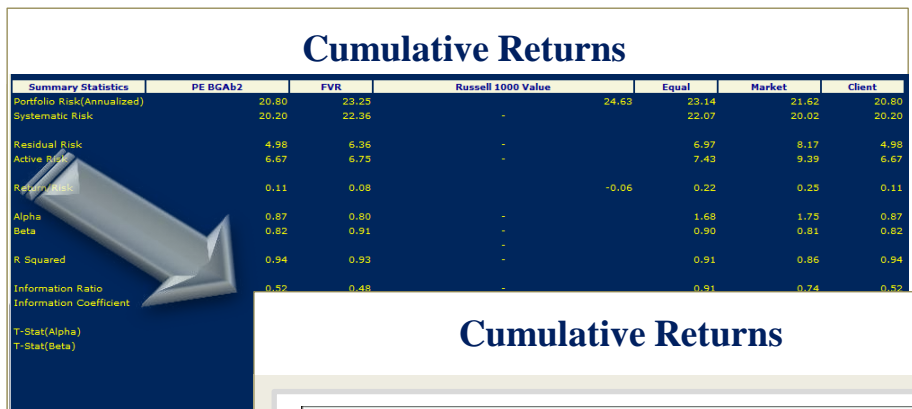
- Define New Screening Data Item
- Create New Screen
- Edit/View Report Format

Alphas

- Define New Alpha Data Item
- Construct Alpha Strategy
- Edit/View Alpha Strategies

Putting it all together:

- Combine, screening, alpha generation and optimal portfolio construction seamlessly into backtesting to inspect consistency in performance over time



Application Menu

Login

Universe

Ratings Changes
 Ratings Reports
 Factor Returns
 Daily Earnings Report
 Benchmark Returns
 Sector Analysis
 ERS Changes
 Trend Analysis
 Universe Valuation Analysis

Lists

Select Companies/Create List
 Edit/View Existing Trade Lists
 Existing DCF Templates

Individual Security Analysis

Individual Analysis
 Valuation Analysis
 Short Term Trend Analysis
 ERS Analysis
 ProForma Financials

Portfolio Analysis

Construct/Analyze a Portfolio
 Track Portfolio Performance
 Holdings Based Style Analysis

Backtesting

Build a Test
 Edit/Run a Test
 View Test Results

Screening

Define New Screening Data Item
 Create New Screen
 Edit/View Report Format

Alphas

Define New Alpha Data Item
 Construct Alpha Strategy
 Edit/View Alpha Strategies

For more information, please contact:

BRV PERSONNEL

STEVE SINGLETON
Executive Vice President
 Director of Research
 (510) 268-4850
ssingleton@brv-llc.com

CLAYTON EARLE
Senior Vice President
 Research Analyst
 (510) 268-4857
cearle@brv-llc.com

JOEL ACHRAMOWICZ
Senior Vice President
 Research Analyst
 (510) 268-4855
jachramowicz@brv-llc.com

SEAN MCKENNA
Senior Vice President
 Research Analyst
 (510) 268-4853
smckenna@brv-llc.com

GAIL SCHAEFFER
Senior Vice President
Institutional Trading
 (972) 722-4183
gschaeffer@brv-llc.com

TIMOTHY O'BRIEN
Executive Vice President
 Head of Trading
 (510) 208-6101
tobrien@brv-llc.com

RUSSELL WARE
Executive Vice President
 Global Trading Platform
 (510) 268-4848
rware@brv-llc.com

DERIC BAGAROZZA
Senior Vice President
 Head of Equity Trading
 (212) 715-6646
dbagrozza@brv-llc.com

JOSH GRANITE
Senior Vice President
 Equity Trading
 (212) 715-6620
jgranite@brv-llc.com

DUDLEY BROWN
Senior Vice President
 Trading
 (312) 324-0772
jgranite@brv-llc.com

NEW YORK OFFICE:
 600 Lexington Avenue, 3rd Fl.
 New York, NY 10022
 (212) 715-6600

OAKLAND OFFICE:
 350 Frank H. Ogawa Plaza, 10th Fl.
 Oakland, CA 94612
 (510) 208-6100

or visit website at www.brv-llc.com